



SI SERIES PRODUCT SPECIFICATIONS

Single Gang with Illuminated Icon Push Button



FEATURES

- ILLUMINATED SQUARE PUSH BUTTON with *SideCiK™* DESIGN
- FITS STANDARD SINGLE GANG BOX APPLICATIONS
- PERFECT FOR ALUMINUM DOOR FRAMES
- HEAVY DUTY AIRCRAFT GRADE ALUMINUM FACE PLATE
- UNIQUE FACEPLATE DESIGNS ASSURES FLUSH MOUNTING
- HIGH QUALITY ICON IDENTIFIERS
- 12 & 24 VOLT BULBS INCLUDED
- UL APPROVED SWITCHES
- SPDT SWITCH STANDARD
- INDOOR OR OUTDOOR APPLICATIONS
- COLOR CODED 20 AWG SOLDERED LEADS
- TORX TAMPER PROOF SCREWS PROVIDED
- BHMA 689 SATIN ALUMINUM ANODIZED FINISH
- OPTIONAL 1-60 SECOND ELECTRONIC TIME DELAY
- MULTIPLE VANDAL RESISTENT FEATURES
- FAST & EASY TO INSTALL

DESCRIPTION

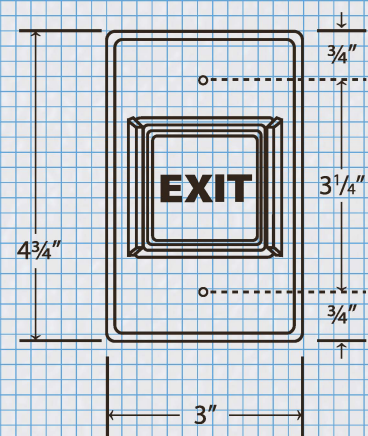
The SI Illuminated ICON Push Button Series: Single Gang, faceplate 3" (75mm) wide for gang box or surface mounting applications.

This SI Series of Illuminated ICON Push Button with *SideCiK™* Button Guard Defender is designed to surpass the current demands presented today in application for visible exit controls. Faceplates are fabricated from aircraft grade aluminum with all rounded safety edges. The ICON lens quality bring a new level in ease of view not found on any other manufactured illuminated exit control available in today's market

The SI Illuminated ICON Push Button with 15 amp @ 125 VAC switch and Two (2) Torx tamperproof security screws are supplied bring another enhancement to this series. This overall design and construction are ideal for applications where tamper resistance, edge deflection and safety issues are required.

ETI Illuminated ICON Push Button Series, Performance by design is supplied with features pertaining to access and egress for real world security control pertaining to any facilities specifications.

Single Gang Faceplate



Single Gang Faceplate



SI SERIES PRODUCT SPECIFICATIONS

Single Gang with Illuminated Icon Push Button

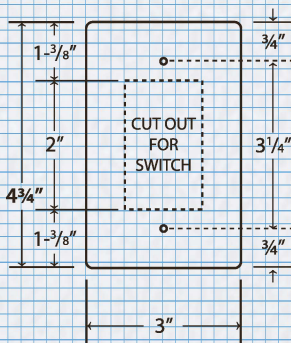
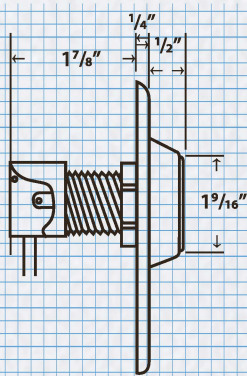


APPLICATION

SI Series push switches are designed to control, shunt and perform timed functions. Designed for integration and performing with electrified locks, electro-magnetic locks, electric strikes and automatic doors. They may also be used for request to exit in high traffic areas, such as school, hospital, commercial and store entrances and exits. Switches are designed for high frequency usage, in any environment whether indoor or outdoor applications.

ARCHITECTS/ENGINEERS SPECIFICATIONS

Single Gang Faceplate



ETI Illuminated Push Switch Controls to be integrated throughout the location or facility are exclusive to ETI Products.

The Illuminated Button with *SideClick™* Button Guard Defender shall be designed to be activated with a Square size button configuration incorporating a 1/4" maximum switch action throw. Design will encompass a high quality ICON identifier with color lens and white ICONs. The heavy duty, flush mount, oversized, aircraft

grade aluminum faceplate will comply with BHMA finish standards and incorporate fully rounded corners for safety.

The Illuminated Button series will be supplied with a UL approved switch, rated for 15A/125V AC and stainless steel Torx mounting screws.

Overall design will display and function with collective features of durability, safety, anti-tamper, anti-vandal and side impact resistant properties.



SI SERIES

SIE50

1 switch SPDT momentary, Red Lens, "EXIT" ICON with White Letters, Faceplate with BHMA 689 Finish

SIG50

1 switch SPDT momentary, Green Lens, "PUSH TO EXIT" ICON w/ White Letters, Faceplate with BHMA 689 Finish

SIH50

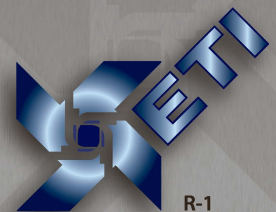
1 switch SPDT momentary, Blue Lens, "HANDI" ICON w/ White Letters, Faceplate with BHMA 689 Finish

SIP50

1 switch SPDT momentary, Red Lens, "PUSH TO EXIT" ICON w/ White Letters, Faceplate with BHMA 689 Finish

OPTIONS

- LEDS:
- Option R - RED 12/24 volt, Mounted
 - Option G - GREEN 12/24 volt, Mounted
 - Option T - RED(1) & GREEN (1) 12/24 volt, Mounted



ETI PRODUCTS

P: 877•ETI•ETI1 (384-3841)

F: 877•ETI•ETI2 (384-3842)

E: tech@etiproducts.net

W: ETIproducts.net