



HEAVY DUTY KEY SWITCH

Large & Small Format Inter-changeable Core Cylinder

"NEW" FUNCTION
180° Rotation Key Retained





COMPATIBLE Best®

 <h2>ICES67B4</h2> 	SWITCH TYPE B4-SPDT (Single pole – Double Throw)	SWITCH ACTION Maintained on-on	KEY ROTATION 180° Clockwise-on
	CONTACT RATING 15A 125vac, 15A 250vac Resistive		FINISHES BHMA 626, 613 & 606
	PANEL MOUNT PREPARATION Large Cam Lock Style 1-5/32" dia by .950" (flat width) Double "D" Design MODEL: J4 (2) SPDT Switches (Single Pole – Double Pole)		





COMPATIBLE Corbin®

 <h2>ICCO03B4</h2> 	SWITCH TYPE B4-SPDT (Single pole – Double Throw)	SWITCH ACTION Maintained on-on	KEY ROTATION 180° Clockwise-on
	CONTACT RATING 15A 125vac, 15A 250vac Resistive		FINISHES BHMA 626, 613 & 606
	PANEL MOUNT PREPARATION Large Cam Lock Style 1-5/32" dia by .950" (flat width) Double "D" Design MODEL: J4 (2) SPDT Switches (Single Pole – Double Pole)		





COMPATIBLE Sargent®

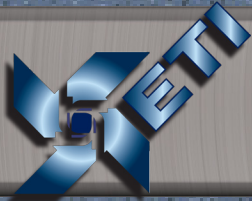
 <h2>ICSA02B4</h2> 	SWITCH TYPE B4-SPDT (Single pole – Double Throw)	SWITCH ACTION Maintained on-on	KEY ROTATION 180° Clockwise-on
	CONTACT RATING 15A 125vac, 15A 250vac Resistive		FINISHES BHMA 626, 613 & 606
	PANEL MOUNT PREPARATION Large Cam Lock Style 1-5/32" dia by .950" (flat width) Double "D" Design MODEL: J4 (2) SPDT Switches (Single Pole – Double Pole)		



COMPATIBLE Schlage®

 <h2>ICSC01B4</h2> 	SWITCH TYPE B4-SPDT (Single pole – Double Throw)	SWITCH ACTION Maintained on-on	KEY ROTATION 180° Clockwise-on
	CONTACT RATING 15A 125vac, 15A 250vac Resistive		FINISHES BHMA 626, 613 & 606
	PANEL MOUNT PREPARATION Large Cam Lock Style 1-5/32" dia by .950" (flat width) Double "D" Design MODEL: J4 (2) SPDT Switches (Single Pole – Double Pole)		



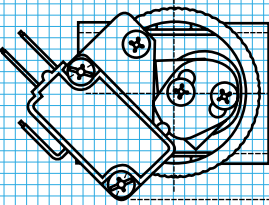
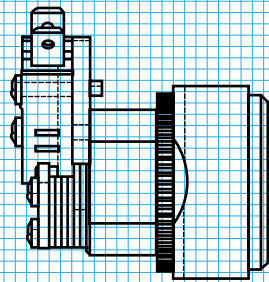


HEAVY DUTY KEY SWITCH

Large & Small Format Inter-changeable Core Cylinder

ARCHITECTS/ENGINEERS SPECIFICATIONS:

Heavy Duty Switch



ETI Heavy Duty Key Switch controls with Inter-changeable Core Cylinder function that are to be integrated throughout the location or facility are exclusive to ETI products. The key switches shall perform key system integration by way of inter-changeable cylinder core function in application of panel or switch plate mountings. This design will incorporate the selection of multiple switch function options.

The key switch control will incorporate an inter-changeable cylinder core housing with heavy duty switches which are permanently mounted to the cylinder housing and function by way of a direct motion cam that controls the function of the switch(s) in action and key rotation. All functioning of the switch control mechanism will be manufactured of parts made of high grade brass or plated ferrous metal materials.

Optional switch control mounting, available with Narrow, Single Gang or Double Gang Faceplates constructed of heavy duty, flush mount, oversized, aircraft grade aluminum featuring BHMA finish standards, incorporates fully rounded corners and edges for safety.

The heavy duty switches used are UL approved, rated for 15amp/125v and 15amp/250volt AC with blade or screw mount terminals.

Overall design will display and function with collective features of durability, safety, anti-tamper and vandal-resistant properties.

APPLICATION

ETI model B4 and J4 Inter-changeable Core Key Switch Controls will integrate into systems performing the **Key Retaining Function** for control applications in Lighting, HVAC, Recreational Devices (spas), Shunting, Activating or Deactivating Control Equipment and other applications.

OPTIONS:

FACEPLATES



Narrow Faceplate
option **0**

(for models A1, B1, B2, B3, B4, D2, E2, J3, J4, K4, L2, only)



Single Gang Faceplate
option **1**



Double Gang Faceplate
with single switch
option **2**

(for models A1, B1, B2, B3, B4, D2, E2, J3, J4, K4, L2, only)



Double Gang Faceplate
with double switch
option **3**

(for models A1, B1, B2, B3, B4, J3, J4 only)

FINISHES

Satin Chrome
BHMA 626
option **S**

Oiled Rubbed Bronze
BHMA 613
option **D**

Satin Brass
BHMA 606
option **B**

FINISHES

RED (1)
12/24 volt, mounted
option **R**

GREEN (1)
12/24 volt, mounted
option **G**

RED (1) & GREEN (1)
12/24 volt, mounted
option **T**

